



# Commercial Land 1 Block off Hwy 190



**Priced To Sell!**  
**\$3.30/sf**



## FOR SALE

- **Listed Price:** \$380,000 or \$3.30/sf
- **Total Square Feet:** 115,200
- **Total Acres:** 2.64 acres
- **Location:** 1 block off Hwy 190
- **Zoning:** HC1 and NC4

Prime commercial real estate located 1 block off Hwy 190. Perfect for Multi-Family, Retail or Office Project. Two full squares, 240' x 240' each, can be subdivided.

**Charles Tassin**

Cell: 504-812-9751

Email: [CharlesT@MMSRE.com](mailto:CharlesT@MMSRE.com)

**Steve "Skip" Scoggin**

Cell: 985-373-0019

Email: [Skip@MMSRE.com](mailto:Skip@MMSRE.com)

**Mauti Meredith Scoggin Properties**

1131 N. Causeway Blvd.

Mandeville, LA 70471

Office: 985-893-3500

Fax: 985-893-3502

Website: [www.MMSRE.com](http://www.MMSRE.com)

# Mauti Meredith Scoggin

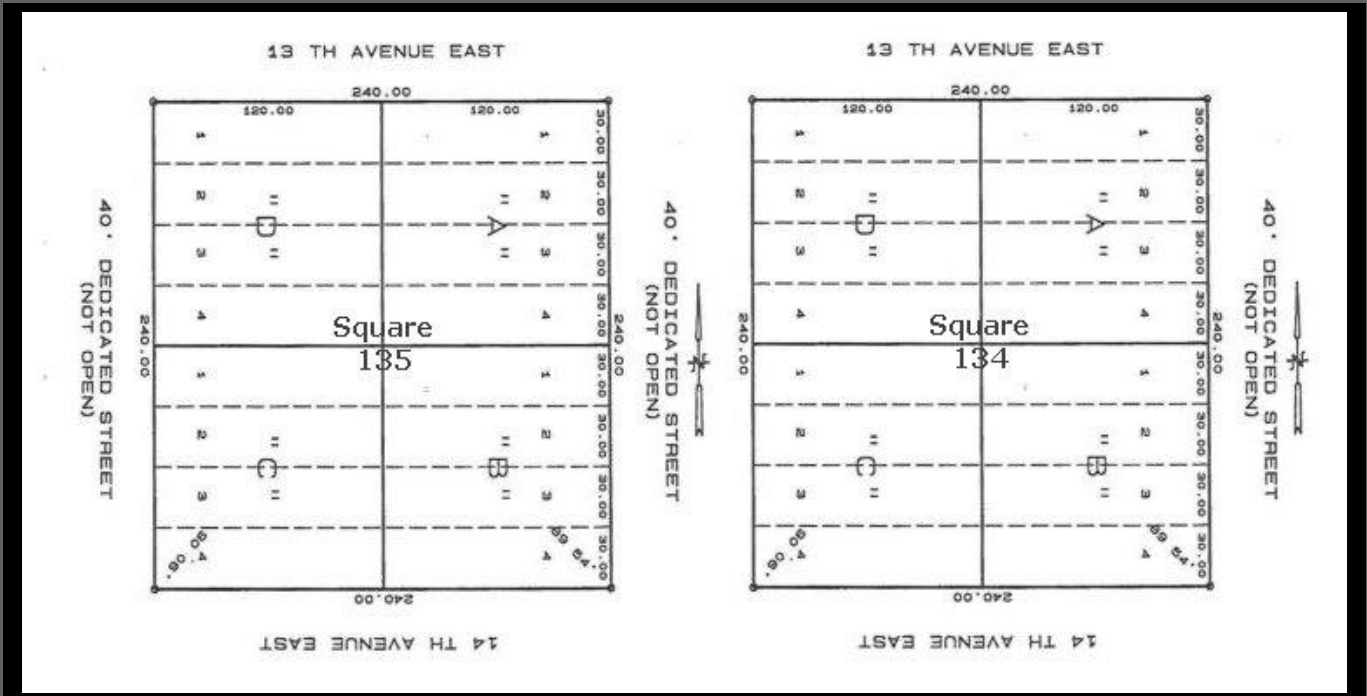
COMMERCIAL  RESIDENTIAL

Mauti Meredith Scoggin Properties makes no representations or warranties regarding the properties discussed herein. It is the responsibility of the Purchaser/Lessee to investigate the condition and attributes of the property and to verify the accuracy of the enclosed information to the extent of said Purchaser/Lessee deems necessary. This information is subject to errors, omissions, changes in terms and conditions, prior sale, lease, or withdrawal, without notice. 09/27/11

## Zoning Map



## Survey



**Charles Tassin**  
 Cell: 504-812-9751  
 Email: [CharlesT@MMSRE.com](mailto:CharlesT@MMSRE.com)

**Steve "Skip" Scoggin**  
 Cell: 985-373-0019  
 Email: [Skip@MMSRE.com](mailto:Skip@MMSRE.com)