

GENERAL NOTES

THIS SURVEY IS A REPRODUCTION OF THE SURVEY RECORD... THE SURVEYOR HAS REVIEWED THE RECORD AND FOUND IT TO BE CORRECT AND COMPLETE... THE SURVEYOR HAS REVIEWED THE RECORD AND FOUND IT TO BE CORRECT AND COMPLETE...

SECTION 13
SECTION 24
SECTION 19

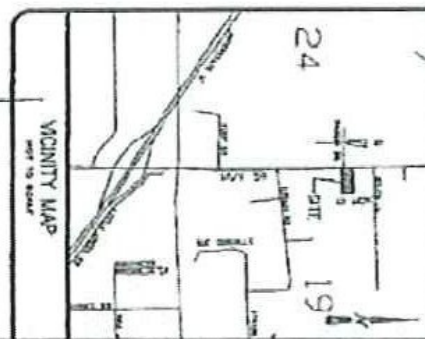
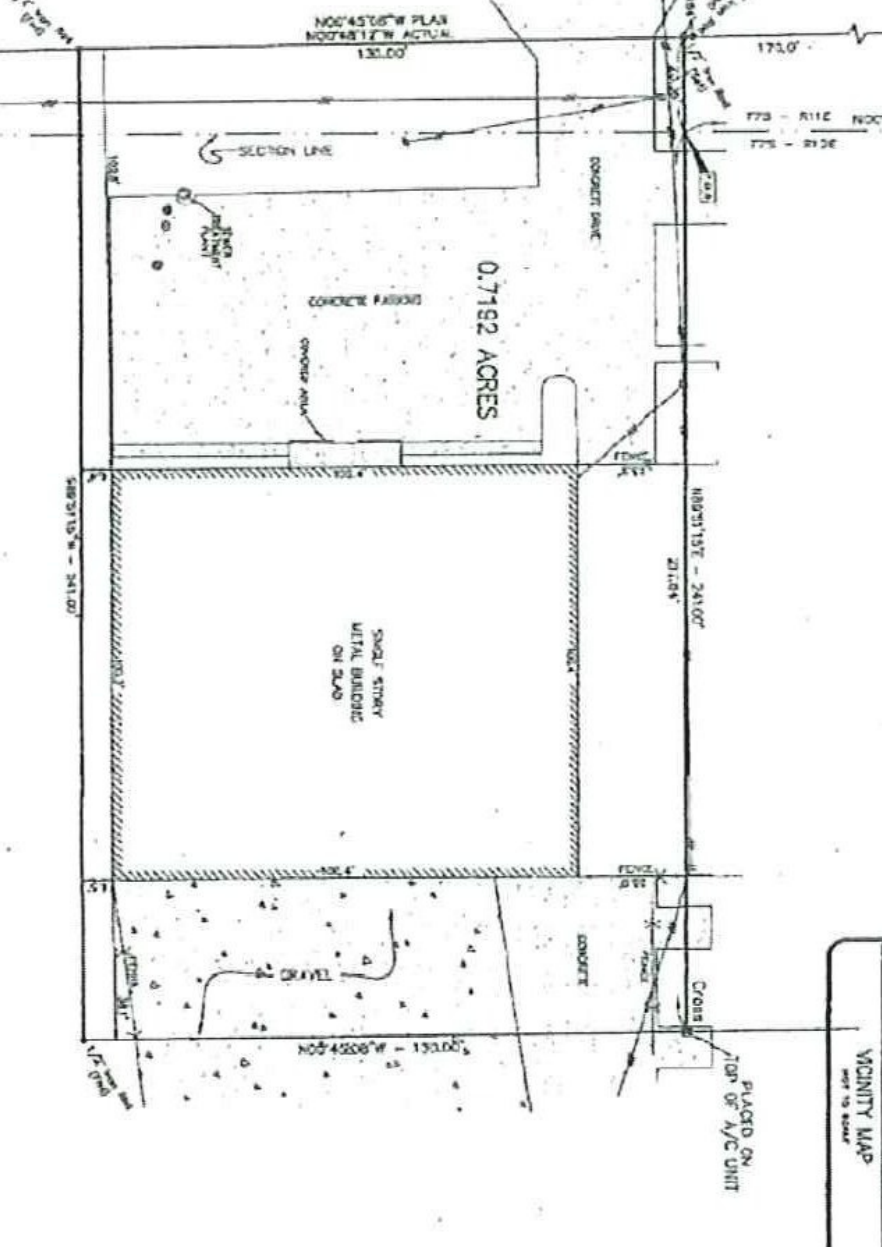
LA STATE HIGHWAY 59

PINE GROVE STREET (RD 504)

0.7192 ACRES

CONCRETE PAVING

SMALL STRIPPY METAL BUILDING ON SLAB



GRAPHIC SCALE

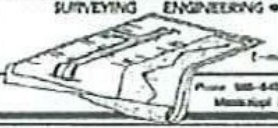
1 Inch = 50 Feet

CERTIFICATION

I HEREBY CERTIFY THAT THE INFORMATION CONTAINED HEREON WAS OBTAINED BY ME OR BY A PERSON EMPLOYED BY ME AND IS TRUE AND CORRECT TO THE BEST OF MY KNOWLEDGE AND BELIEF.

SURVEY OF A 0.7192 ACRE PARCEL OF LAND LOCATED IN SECTION 19, T7S - R12E AND SECTION 24, T7S - R11E NEAR THE TOWN OF MANDEVILLE ST. TAMMANY PARISH, LOUISIANA

J.V. Burkes & Associates, Inc. SURVEYING ENGINEERING & ENVIRONMENTAL



1905 Shortleaf HWY. Bossier, Louisiana 70456
Phone: 840-840-1075 Fax: 840-840-9343
Mississippi Phone: 601-437-2600



DAVID SCHRAIB