



# 1 Acre zoned HC1 in Mandeville



## FOR SALE

- **Size:** 1 acre or 43,600 S/F
- **Listed Price:** \$5.00 per square foot or \$218,000.00
- **Zoning:** HC1, Highway Commercial
- **Location:** Penn Chapel Rd , one block off Highway 22, Mandeville
- **Flood Zone:** "C"
- **Possible Uses:** Office Building, Day Care, Medical, Physical Therapy...

**Rich Mauti**

**Cell: 985-630-1649**

**Email: [rmauti@mms-properties.com](mailto:rmauti@mms-properties.com)**

**Mauti Meredith Scoggin  
Properties**

**100 Innwood Drive, Suite A**

**Covington, LA 70433**

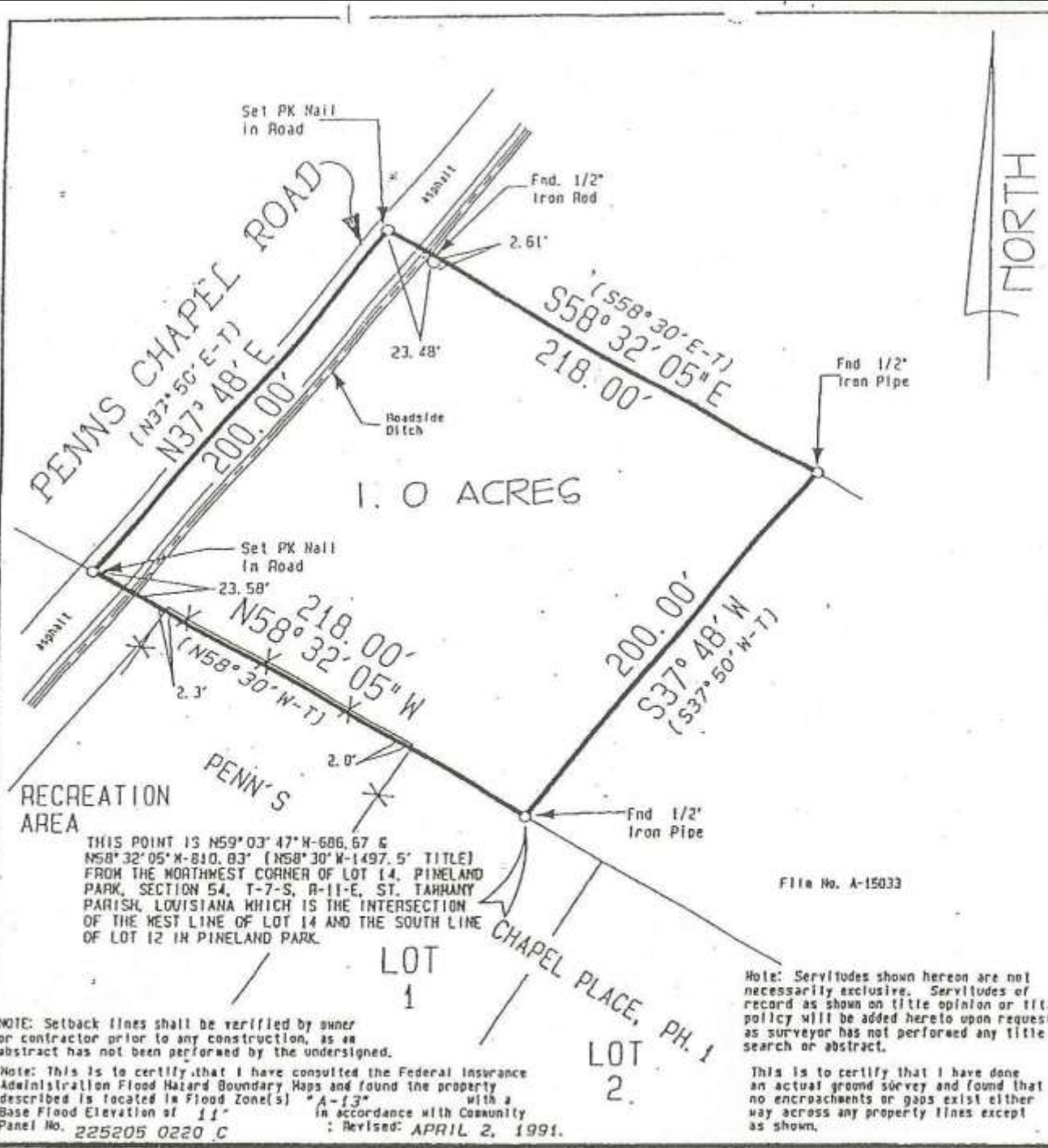
**Office: 985-893-3500**

**Fax: 985-893-3502**

**Website: [www.mms-properties.com](http://www.mms-properties.com)**

# Mauti Meredith Scoggin

**C O M M E R C I A L    ✦    R E S I D E N T I A L**



THIS IS TO CERTIFY THAT THIS SURVEY WAS DONE UNDER MY DIRECT SUPERVISION AND CONTROL; AND THAT THE SURVEY WAS DONE ON THE GROUND AND IS IN ACCORDANCE WITH THE "MINIMUM STANDARDS FOR PROPERTY BOUNDARY SURVEYS" AS ADOPTED BY THE STATE OF LOUISIANA, BOARD OF REGISTRATION FOR PROFESSIONAL ENGINEERS AND LAND SURVEYORS FOR A CLASS "D" SURVEY.

**SURVEY MAP OF**  
**A 1.0 ACRE PARCEL OF LAND**  
 in  
**SECTION 54, TOWNSHIP 7 SOUTH, RANGE 11 EAST**  
**PINELAND PARK**  
**St. Tammany Parish, Louisiana**

**For more information on**  
**Mauti Meredith Scoggin Properties**  
**please visit our website**  
**www.mms-properties.com**

**Rich Mauti**  
**Cell: 985-630-1649**  
**rmauti@mms-properties.com**